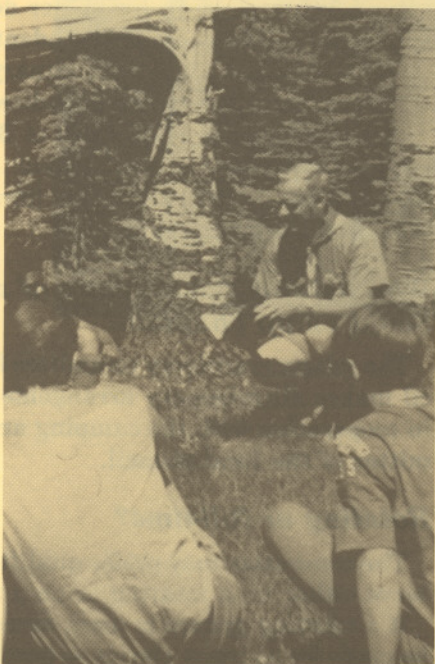


National Camping School nearest their home. Those attending can then share their knowledge with other clerics who will be serving.

The committee preferring a seminarian or theological student as full-time chaplain should arrange to interview and employ the prospective chaplain and arrange for attendance at the National Camping School. If the local council religious advisory committee is unable to obtain a chaplain through a seminary, ask the Religious Relationships Service at the BSA national office for help.

How does the local council religious advisory committee secure a chaplain?

1. The religious advisory committee for the local Scouting council contacts area seminaries and places seminarians who desire to serve as chaplain or arranges a rotating plan among local clerics.
2. If unable to secure a seminarian or local cleric to serve, contact the Religious Relationships Service, S226, Boy Scouts of America, 1325 West Walnut Hill Lane, P.O. Box 152079, Irving, TX 75015-2079.



3. Personal contacts will be made at seminaries, and students will be supplied with a list of councils whose religious advisory committees have indicated interest in securing the services of a chaplain.
4. The Religious Relationships Service will send names and addresses of seminarians who have expressed a desire to serve as chaplain. If there are no applicants, the committee will be notified immediately.
5. The local council religious advisory committee makes direct contact with the applicant regarding the interview, hiring, salary, housing, and other details of employment.
6. When the chaplain has been hired, a notice or a copy of a letter of agreement is sent to Religious Relationships Service, BSA national office.

How can a student apply for a position as a Scout camp chaplain?

1. The student contacts the director of field education of the seminary and discusses the possibility of participating in such a summer ministry.
2. The student or director of field education contacts:
Religious Relationships Service, S226
Boy Scouts of America
1325 West Walnut Hill Lane
P.O. Box 152079
Irving, TX 75015-2079
3. The Religious Relationships Service notifies councils desiring a seminarian to serve as chaplain.
4. The local council religious advisory committee contacts the student directly to offer summer employment and notifies the Religious Relationships Service upon completion of agreement for employment.

A student may receive a list of camps from a recruiter. The student then writes directly to the camps.

Summertime Ministry

As a Scout Camp Chaplain



What are the duties of a Scout camp chaplain?

- Serves as a counselor to leaders and staff on problems of a personal, interpersonal, general, or spiritual nature.
- Counsels individual boys as requested by leaders.
- Assists with camp or troop discipline problems, personality clashes, homesickness, etc.
- Assists staff with registration and reception, if requested.
- Arranges for prayers at meals.
- Conducts devotional periods as scheduled through the program director.
- Conducts a minimum of one worship service each week.
- Encourages interest in religious emblem programs.
- Helps with campfire programs.
- Submits weekly reports of activities to local council religious advisory committee.
- Submits a final summary of accomplishments to committee.

To serve better, the chaplain should . . .

- Participate in the chaplaincy section of National Camping School. One-half of the fee is paid by national Religious Advisory Committee.
- Be familiar with *The Official Boy Scout Handbook* and religious emblems program literature.
- Participate in a precamp orientation session with camp staff.

What do chaplains in BSA summer camps do?

- Help the camp director and his staff establish and maintain a climate favorable to moral and spiritual growth.
- Provide for the spiritual needs of the boys while they are in camp.

Providing for the spiritual needs of boys, leaders, and staff in Scout camps is the concern of the religious groups to which they belong. From the point of view of the religious leaders of the community, the chaplain is indispensable to the summer camp.

What is the chaplain's relationship to . . .

. . . The religious advisory committee for a local Scout council?

The local religious advisory committee pays for the chaplain's services. A weekly salary of \$175 to \$250 is recommended for seminarians. The camping season varies from 5 to 10 weeks and extends from the second or third week in June to the second or third week in August.

Since the chaplain is employed by the religious advisory committee for the local council, he or she is responsible to the committee for carrying out the duties it defines. The committee provides the chaplain with necessary material, including religious emblem literature.

Offerings gathered as part of the worship services are deposited by the chaplain and the camp director, then forwarded by check to the local council religious advisory committee.

. . . the BSA local council?

The chaplain is subject to the rules governing the camp and its staff. Most local councils provide meals and lodging for the chaplain while in camp, and some provide a position for the chaplain's spouse, if feasible and desired.



The resident camp director and staff represent the local council in the camping situation. The chaplain, as prime mover in planning religious activities for the campers, coordinates plans with the resident camp director. The chaplains of the various faiths coordinate with the program director the scheduling of worship services to be held in camp.

. . . other individuals or groups?

The chaplain may volunteer to assist a Scoutmaster with a specific task. Friendships with youth and leaders thus gained can contribute much to the chaplain's effectiveness.

The chaplain who assists with registration and reception will meet the parents who bring their boys to camp. The chaplain can strengthen that relationship with parents who return on visitor's day by sharing an incident in the boy's camping experience and encouraging their interest in the religious emblem work.

A card or letter to the boy's religious leader relating the boy's interest in the religious emblems program is encouraged.

Who is eligible to serve as a Scout camp chaplain?

- Any religious leader, at least 21 years old, who is qualified to serve in his or her denomination.
- Seminarians or rabbinical students who have completed at least 1 year of seminary training.
- Theological students in accredited denomination-sponsored liberal arts colleges or Bible colleges who are completing the senior year and are looking toward the ministry as their lifework.
- Retired clergy or rabbis.

Who obtains the services of a Scout camp chaplain?

The religious advisory committee for the local council makes all necessary arrangements. This is done in cooperation with the camping and activities committee of the local council.

Rotating or full-time?

The committee may prefer qualified local clerics to serve either on a rotating or on a full-time basis.

If a rotating system is used, arrangements should be made for as many clerics as possible to attend the